

# SNS1 · SLS1 SERIES

## Standard Attachments

- Main Motor with Inverter
  - Counter Balance
  - Preset Counter - 1 Set
  - Combination Wet Clutch / Brake
  - Die Height Indicator (Scale Unit: 0.1mm)
  - Maintenance Counter - 1 Set
  - Hydraulic Overload Protection
  - Programmable Cam Switches
  - Spare Cam - 8 Sets
  - PPC 9000 Control System
    - SPM and Crank Angle Displays
    - Portable Operator Stand - 1 Set
    - Misfeed Socket - 4 Sets (2A, 2B)
    - Touch Panel Display with Press Running / Error Message
  - Anti-Repeat Safety Circuit
  - Air Ejector - 1 Set
  - Motorized Slide Adjustment
  - Main Motor FWD/REV Controller
  - Air Outlet - 1 Set
  - Automatic Grease Lubrication System
  - Total Counter - 1 Set
  - Maintenance Tool Box
- 

## Optional Attachments

- Light Curtains
- Tooling Light
- Pneumatic Die Cushion
- Anti Vibration Mounts
- Lamp Socket (1A)
- Adjustable Single Shot Lubrication
- Tonnage Indicator
- Foot Switch
- Bottom Dead Center Detector
- Safety Block
- L/R Hand Selector
- Quick Die Change System

# SNS2 · SLS2 SERIES

## Standard Attachments

- Main Motor with Inverter
  - Counter Balancer - Manual Oiler
  - Maintenance Counter - 1 Set
  - Combination Wet Clutch / Brake
  - Die Height Indicator (Scale Unit: 0.1mm)
  - Spare Cam - 8 Sets
  - Hydraulic Overload Protection
  - Programmable Cam Switches
  - Misfeed Socket - 4 Sets (2A, 2B)
  - PPC 9000 Control System
    - SPM and Crank Angle Displays
    - Touch Panel Display with Press Running / Error Message
  - Portable Operator Stand - 1 Set
  - Air Ejector - 1 Set
  - Air Outlet - 1 Set
  - Motorized Slide Adjustment
  - Main Motor FWD/REV Controller
  - Maintenance Tool Box
  - Automatic Grease Lubrication System
  - Total Counter - 1 Set
  - Counter Balance
  - Preset Counter - 1 Set
- 

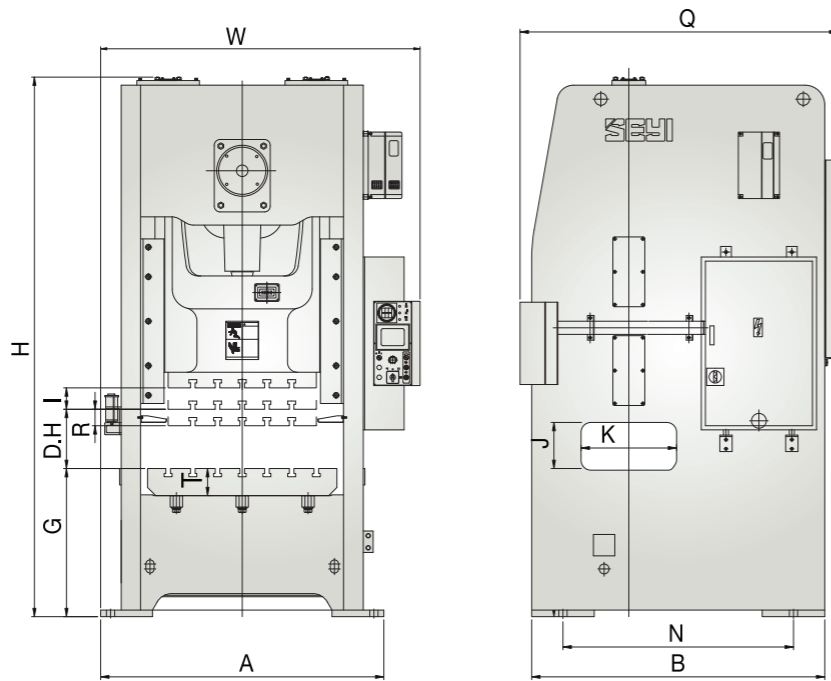
## Optional Attachments

- Light Curtains
- Lamp Socket (1A)
- Bottom Dead Center Detector
- Anti Vibration Mounts
- Foot Switch
- Knockout Device
- Tonnage Indicator
- Booster
- Adjustable Single Shot Lubrication
- Safety Block
- Flywheel Brake
- Quick Die Change System
- Tooling Light
- Pneumatic Die Cushion

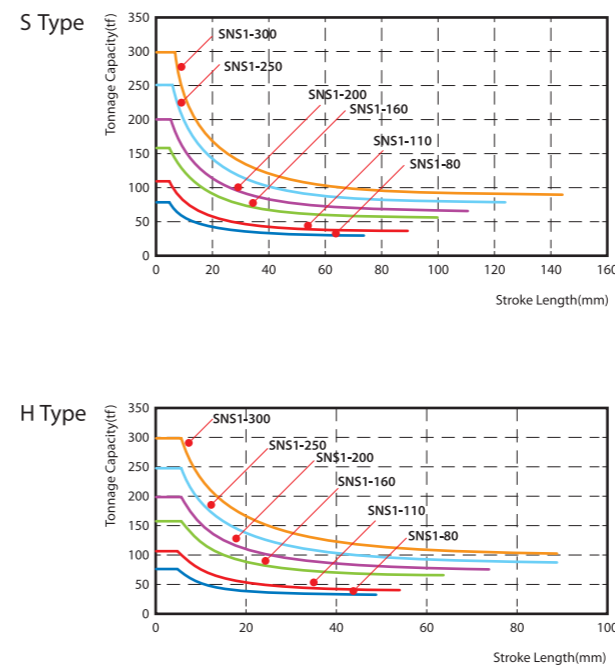
# SNS1 · SLS1 SERIES

Model	SNS1-80		SNS1-110		SNS1-160		SNS1-200		SNS1-250		SNS1-300		SLS1-80		SLS1-110		SLS1-160		SLS1-200		SLS1-250		SLS1-300		
	S	H	S	H	S	H	S	H	S	H	S	H	S	H	S	H	S	H	S	H	S	H	S	H	
Tonnage Capacity	80		110		160		200		250		300		80		110		160		200		250		300		
Stroke Length (l)	150	100	180	110	200	130	220	150	250	180	280	180	150	100	180	110	200	130	220	150	250	180	280	180	
Stroke per Minute	S.P.M. 40~75		55~125		35~65		50~110		30~55		40~95		25~45		35~80		22~40		30~60		20~35		25~50		
Tonnage Rating Point	5		5		6		6		6		6		5		5		6		6		6		6		
Die Height (D.H)	330	300	350	320	400	360	450	400	450	400	500	400	330	300	350	320	400	360	450	400	450	400	500	400	
Slide Adjustment (R)	80		90		100		110		120		120		80		90		100		110		120		120		
Slide Area (L.R.xF.B.)	700X460		800X520		900X580		1000X650		1100X720		1150X800		700X460		800X520		900X580		1000X650		1100X720		1150X800		
Diameter of Shank Hole	ø50.8		ø50.8		ø65		ø65		ø65		ø65		ø50.8		ø50.8		ø65		ø65		ø65		ø65		
Bolster Area (L.R.xF.B.)	900X680	900X460	1000X680	1000X520	1150X760	1150X600	1250X840	1250X680	1350X900	1350X750	1400X1050	1400X850	900X680	900X460	1000X680	1000X520	1150X760	1150X600	1250X840	1250X680	1350X900	1350X750	1400X1050	1400X850	
Bolster Thickness (T)	140		155		165		180		180		200		140		155		165		180		180		200		
Bolster Height (W/O Mounts) (G)	900		900		940		900		1020		1000		1040		1020		900		900		940		900		
Main Motor (Fixed Speed + Inverter)	HPXP 10X4		15X4		20X4		25X4		30X4		40X4		10X4		15X4		20X4		25X4		30X4		40X4		
Slide Adjustment Motor	HPXP 0.5X4		0.5X4		1X4		1X4		1X4		2X4		0.5X4		0.5X4		1X4		1X4		1X4		2X4		
Window Opening (KxJ)	440X280	370X250	500X300	420X270	560X350	470X310	620X400	520X350	680X400	570X350	760X450	650X350	440X280	370X250	500X300	420X270	560X350	470X310	620X400	520X350	680X400	570X350	760X450	650X350	
Foot Print (AxB)	1430X1470	1430X1420	1560X1600	1560X1550	1720X1780	1720X1730	1870X1980	1870X1930	1990X2150	1990X2100	2070X2297	2070X2247	1430X1470	1430X1420	1560X1600	1560X1550	1720X1780	1720X1730	1870X1980	1870X1930	1990X2150	1990X2100	2070X2297	2070X2247	
Floor Space Required (WxQ)	1630X1740		1765X1875		1905X2055		2055X2245		2175X2500		2255X2580		1630X1740		1765X1875		1905X2055		2055X2245		2175X2500		2255X2580		
Press Height (W/O Mounts) (H)	2765		3000		3320		3280		3740		3720		2765		3000		3320		3280		3740		3720		
Upper Die Weight	300		350		500		800		1000		1000		300		350		500		800		1000		1000		
Required Air Pressure	kgf/cm <sup>2</sup> 5		5		5		5		5		5		5		5		5		5		5		5		
<b>Die Cushion (Option)</b>																									
Capacity	tf	6	—	6	—	8	—	10	—	10	—	14	—	6	—	6	—	8	—	10	—	10	—	14	—
Stroke Length	mm	95	—	95	—	110	—	130	—	130	—	140	—	95	—	95	—	110	—	130	—	130	—	140	—
Die Cushion Area (L.R.xF.B.)	mm	480X340	—	480X340	—	560X370	—	700X450	—	700X450	—	700X450	—	480X340	—	480X340	—	560X370	—	700X450	—	700X450	—	700X450	—

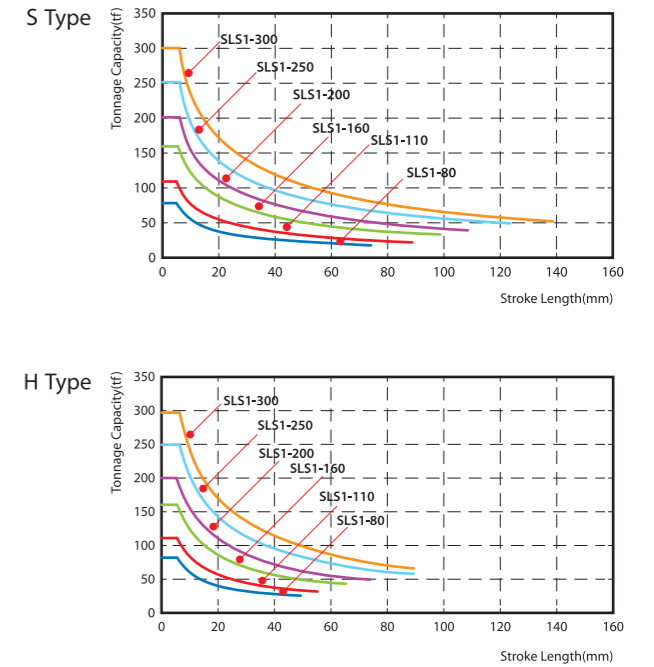
## SNS1 · SLS1 Machine Dimension



## SNS1 Stroke & Pressure Curve



## SLS1 Stroke & Pressure Curve



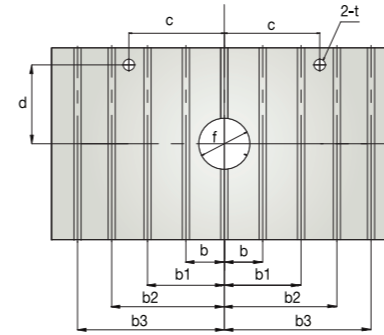
※ This specification is subject to change without notice.

※ Copyright © 2016 All Rights Reserved By SEYI

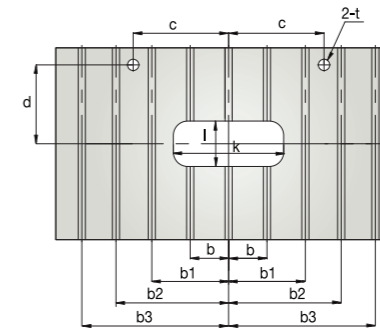
2016.10

Model	SNS1-80		SNS1-110		SNS1-160		SNS1-200		SNS1-250		SNS1-300	
	SLS1-80		SLS1-110		SLS1-160		SLS1-200		SLS1-250		SLS1-300	
Type	S	H	S	H	S	H	S	H	S	H	S	H
b	150		150		150		150		150		150	
b1	300		300		300		300		300		300	
b2	—		—		450		450		450		450	
b3	—		—		—		—		—		600	
c	200		200		200		200		250		250	
f	ø180		ø200		ø220		ø250		ø270		ø270	
d	315	180	315	220	340	260	380	300	410	335	450	335
g	140		140		150		150		150		150	
h	90		90		100		100		100		100	
i(L.R.X.F.B.)	4X4		4X4		4X4		4X5		4X5		4X5	
j	ø32		ø32		ø32		ø32		ø32		ø32	
k	360		400		440		480		540		540	
l	180		200		220		240		270		270	
n	28		28		28		28		28		28	
p	30		30		30		30		30		30	
q	20		20		20		20		20		20	
s	48		48		48		48		48		48	
t	ø30		ø30		ø30		ø30		ø30		ø30	
u	75		75		75		75		75		75	
v	45		45		50		100		100		100	
w	ø40 h7		ø70 h7		ø70 h7		ø70 h7		ø70 h7		ø70 h7	

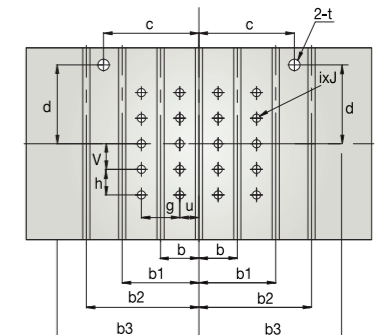
Surface of Bolster-Round Type (Standard)



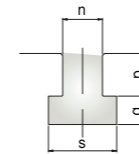
Surface of Bolster-Rectangular Type



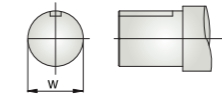
Surface of Bolster-Die Cushion



Size of T-Slot

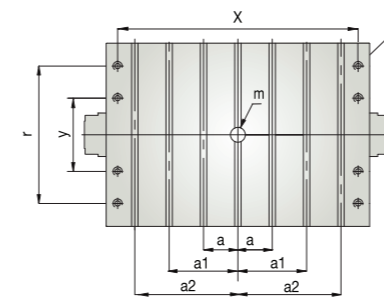


Surface of Take-Off Shaft (Option)

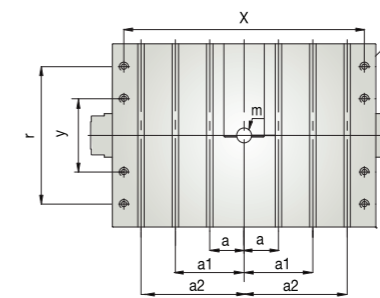


Model	SNS1-80		SNS1-110		SNS1-160		SNS1-200		SNS1-250		SNS1-300	
	SLS1-80		SLS1-110		SLS1-160		SLS1-200		SLS1-250		SLS1-300	
Type	S	H	S	H	S	H	S	H	S	H	S	H
a	150		150		150		150		150		150	
a1	240		300		300		300		300		300	
a2	—		—		—		—		440		450	
m	ø50.8		ø50.8		ø65		ø65		ø65		ø65	
n	28		28		28		28		28		28	
p	30		30		30		30		30		30	
q	20		20		20		20		20		20	
s	48		48		48		48		48		48	
x	600		700		800		900		1000		1050	
r	360		420		480		550		600		600	
y	240		260		280		280		320		320	
z	8-ø18		8-ø23		8-ø23		8-ø23		8-ø23		8-ø23	

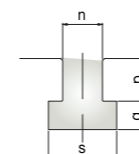
Without Shank Holder



With Shank Holder



Size of T-Slot



Area of Slide

(SNS1/SLS1-80, 110 With Shank Holder, 160~300 Without Shank Holder)

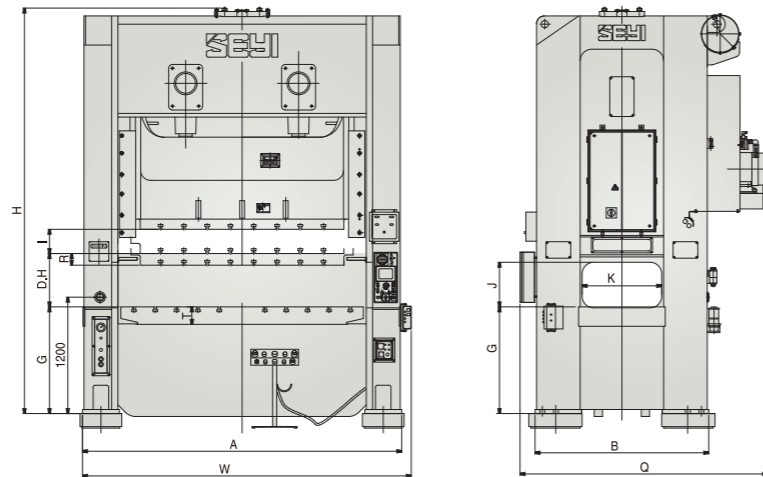
※ This specification is subject to change without notice.

※ Copyright ©2016 All Rights Reserved By SEYI

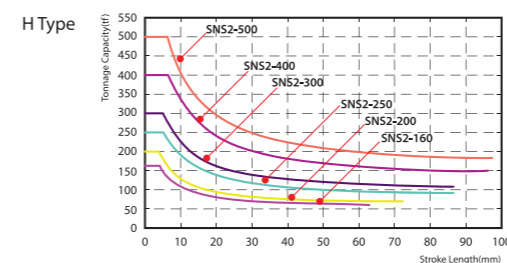
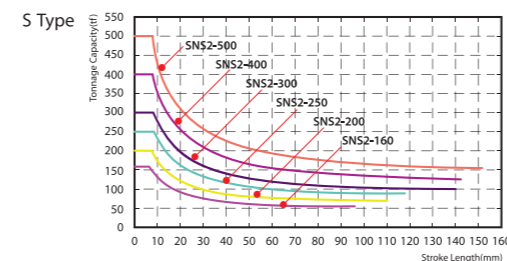
# SNS2 · SLS2 SERIES

Model	SNS2-160		SNS2-200		SNS2-250		SNS2-300		SNS2-400		SNS2-500		SLS2-160		SLS2-200		SLS2-250		SLS2-300		SLS2-400		SLS2-500														
	S	H	S	H	S	H	S	H	S	H	S	H	S	H	S	H	S	H	S	H	S	H	S	H													
Type	S		H		S		H		S		H		S		H		S		H		S		H		S												
Tonnage Capacity	160		200		250		300		400		500		160		200		250		300		400		500		160												
Stroke Length (l)	200	130	230	150	250	180	280	180	300	200	300	200	300	200	200	130	230	150	250	150	280	150	300	200	300	200											
Stroke per Minute	S.P.M. 30-55		40-85		25-45		35-70		22-40		30-60		20-40		25-50		20-40		25-50		20-40		25-50		30-55												
Tonnage Rating Point	6	4	7	4	7	5	7	5	7	6	7	6	6	5	7	5	7	6	7	7	7	7	7	7	7	7											
Die Height (D.H)	450		400		500		450		550		450		600		450		600		450		550		450		600												
Slide Adjustment (R)	100		100		120		120		120		120		100		100		120		120		120		120		100												
Slide Area (L.R.xF.B.)	mm	1560X650		1850X750		1	2200X820		1		2200X900		1		2200X1000		1		2200X1100		1560X650	1850X750	1	2200X820		1		2200X900		1		2200X1000		1		2200X1100	
							2500X820		2		2500X900		2		2500X1000		2		2500X1100					2		2500X1100											
							2800X900		3		2800X900		3		2800X1000		3		2800X1100					3		2800X1100											
							3100X900		4		3100X900		4		3100X1000		4		3100X1100					4		3100X1100											
Diameter of Shank Hole	ø51X3 Holes		ø51X3 Holes		ø51X3 Holes		ø51X3 Holes		ø51X3 Holes		ø51X3 Holes		ø51X3 Holes		ø51X3 Holes		ø51X3 Holes		ø51X3 Holes		ø51X3 Holes		ø51X3 Holes		ø51X3 Holes		ø51X3 Holes		ø51X3 Holes		ø51X3 Holes		ø51X3 Holes				
Bolster Area (L.R.xF.B.)	mm	1850X760		2200X840		1	2500X920		1		2500X1000		1		2500X1100		1		2500X1200		1850X760	2200X840	1	2500X920		1		2500X1000		1		2500X1100		1		2500X1200	
							2800X920		2		2800X1000		2		2800X1100		2		2800X1200					2		2800X1200											
							3100X1000		3		3100X1000		3		3100X1100		3		3100X1200					3		3100X1200											
							3400X1000		4		3400X1000		4		3400X1100		4		3400X1200					4		3400X1200											
Bolster Thickness (T)	160		170		180		200		200		200		160		170		180		200		200		200		160		170		180		200		200				
Bolster Height (W/O Mounts) (G)	mm	950		1000		1	1100		1,2		1150		1250		1250		950	1000		1	1100		1,2		1150		1250		1250		1250		1250				
							1150		3,4		1250		1250		1150			3,4			1250		1250														
Main Motor (Fixed Speed + Inverter)	HPXP	20X4		25X4		30X4		40X4		50X4		60X4		20X4		25X4		30X4		40X4		50X4		60X4		20X4		25X4		30X4		40X4		60X4			
Slide Adjustment Motor	HPXP	2X4		2X4		2X4		2X4		2X4		2X4		2X4		2X4		2X4		2X4		2X4		2X4		2X4		2X4		2X4		2X4					
Window Opening (K)	mm	660		740		820		900		1000		1100		660		740		820		900		1000		1100		660		740		820		900		1100			
Window Opening (J)	mm	400	320	450	350	460	350	500	350	550	400	550	400	400	320	450	350	460	350	500	350	550	400	550	400	400	320	450	350	500	350	550	400	550			
Foot Print (AxB)	mm	2600X1430		2930X1650		1	3290X1790		1		3390X1870		1		3410X2070		1		3670X2170		2600X1560	2930X1650	1	3290X1850		1		3390X1930		1		3410X2070		1		3670X2170	
							3690X1790		2		3690X1870		2		3710X2070		2		3970X2170					2		3970X2170											
							4300X1870		3		4000X1870		3		4010X2070		3		4050X2170					3		4050X2170											
							4300X1870		4		4300X1870		4		4310X2070		4		4350X2170					4		4350X2170											
Required Floor Space (WxQ)	mm	2705X2345		3045X2490		1	3390X2555		1		3490X2665		1		3545X2955		1		3800X3210		2675X2405	3005X2495	1	3365X2695		1		3490X2780		1		3485X3160		1		3745X3265	
							3790X2555		2		3790X2665		2		3845X2955		2		4100X3210					2		4075X3265											
							4100X2575		3		4100X2575		3		4145X2955		3		4180X3210					3		4375X3265											
							4400X2575		4		4400X2575		4		4445X2955		4		4480X3210					4		4675X3265											
Press Height (W/O Mounts) (H)	mm	3510	3450	3885	3830	1	4180	1	4050	1,2	4505	1,2	4355	1,2	4820	1,2	4565	1,2	5020	1,2	4770	1,2	4910	1,2	4770	1,2	5105	1,2	4955	1,2	5105	1,2	4955				
							4230	2	4100	3,4	4620	3,4	4470	3,4	4865	3,4	4715	3,4	5020	3,4	4770	3,4	4990	3,4	4840	3,4	5175	3,4	5025	3,4	5025	3,4	5025				
Upper Die Weight	kg	1400		2000		1		2200		1,2		2800		1,2		3000		1,2		3200		1400		2000		1		2200		1,2		2800		1,2		3200	
Required Air Pressure	kgf/cm <sup>2</sup>	6		6		6		6		6		6		6		6		6		6		6		6		6		6		6		6		6			

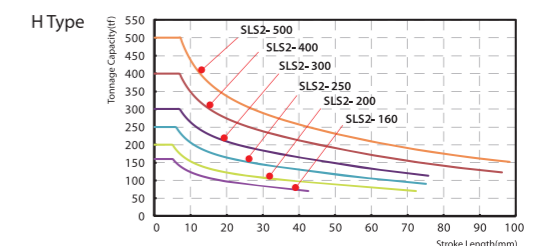
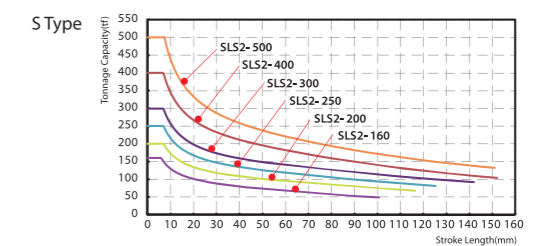
## SNS2 · SLS2 Machine Dimension



## SNS2 Stroke & Pressure Curve



## SLS2 Stroke & Pressure Curve



※ This specification is subject to change without notice.

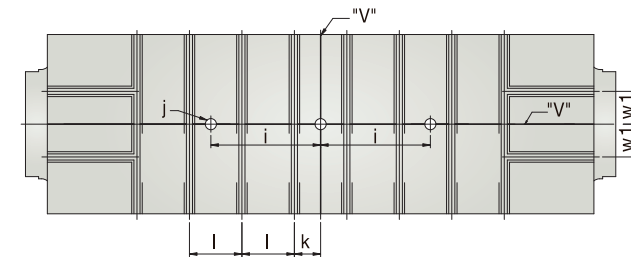
※ Copyright ©2016 All Rights Reserved By SEYI

2016.10

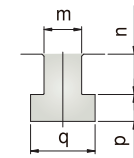
Model	SNS2-160		SNS2-200		SNS2-250		SNS2-300		SNS2-400		SNS2-500	
	S	H	S	H	S	H	S	H	S	H	S	H
a	200		215		235		235		235		235	
b	200		220		220		220		220		220	
c	150		160		180		1,2	180	1,2	180	1,2	180
							3,4	400	3,4	400	3,4	400
d	100		110		110		110		110		110	
e	100		100		100		100		100		100	
f(L,R,X,F,B)	6X4X2		7X5X2		7X5X2		7X5X2		7X5X2		7X5X2	
g	ø32		ø32		ø32		ø32		ø32		ø32	
h	400		490		510		1,2	510	1,2	510	1,2	510
							3,4	730	3,4	730	3,4	730
i	400		450		450		1,2	450	1,2	582	1,2	679
							3,4	900	3,4	900	3,4	
j	ø51 H7		ø51 H7		ø51 H7		ø51 H7		ø51 H7		ø51 H7	
k	200		110		120		120		120		120	
l	200		220		240		240		240		240	
m	28		28		28		28		28		28	
n	30		30		30		30		30		30	
p	20		20		20		20		20		20	
q	48		48		48		48		48		48	
w1	125		140		150		150		150		150	

### SNS2/SLS2 Dimensions of slide & bolster

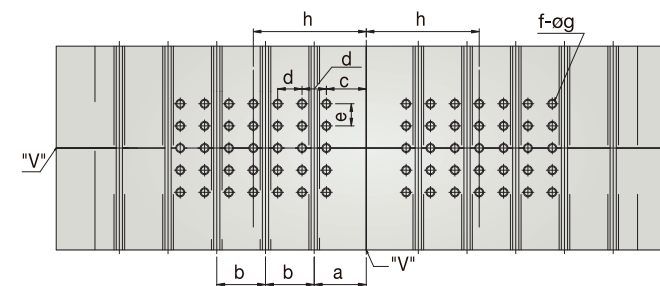
#### Surface of Slide



#### Size of T-Slot



#### Surface of Bolster



※ This specification is subject to change without notice.

※ Copyright ©2016 All Rights Reserved By SEYI